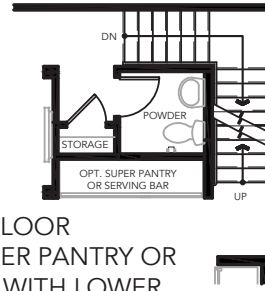
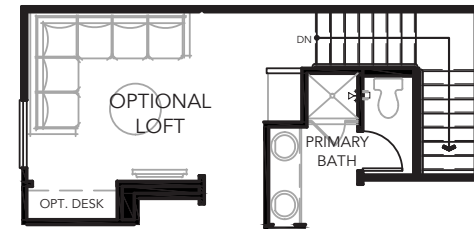




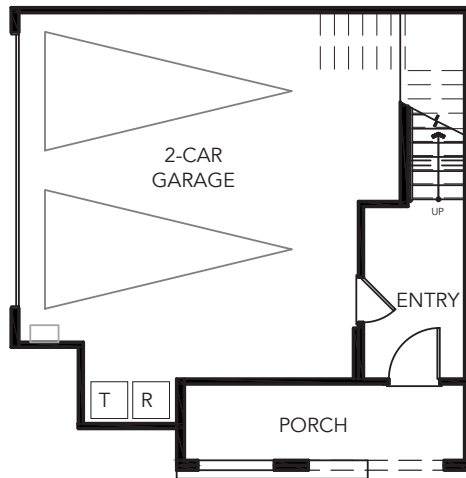
PLAN 3, The Mandarin
 3 Bed, 2.5 Bath
 2-Car Side-by-Side Garage
 Approx. 1,503 Sq Ft



2ND FLOOR
 OPTIONAL SUPER PANTRY OR
 SERVING BAR WITH LOWER
 CABINETS



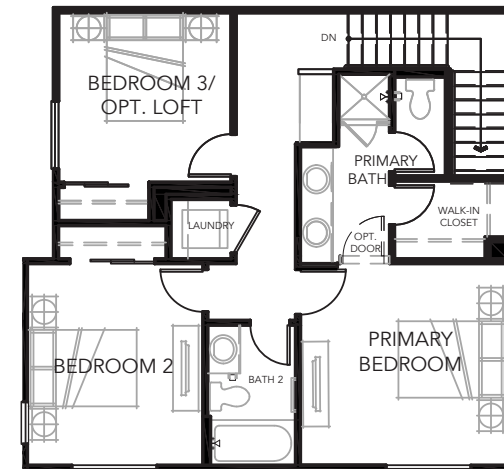
3RD FLOOR
 OPTIONAL LOFT



1ST FLOOR



2ND FLOOR



3RD FLOOR

*Privacy windows at select locations, see Home Advisor for details.

Laurel Walk by The Olson Company | 13811 Valley View Avenue, La Mirada, CA 90638 | (562) 370-9507 | jbledsoe@theolsonco.com | LaurelWalkHomes.com

Floorplans and renderings are artist's conception based on preliminary information. Some homesites may be pre-plotted for specific variations or options. Please consult your Home Advisor for details. In an effort to improve our homes, Olson Homes reserves the right to change features, prices or plans without notice. Windows, doors, porches, patios and decks vary per elevation and per homesite location. Floorplan measurements are approximate. Prices and availability are subject to change without notice. BRE #01877641. CSLB #939166 Olson Urban Housing, L.P.

