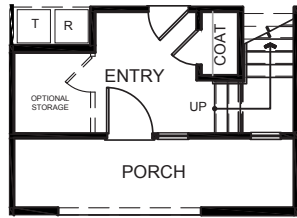
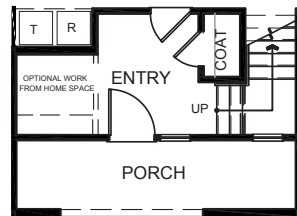




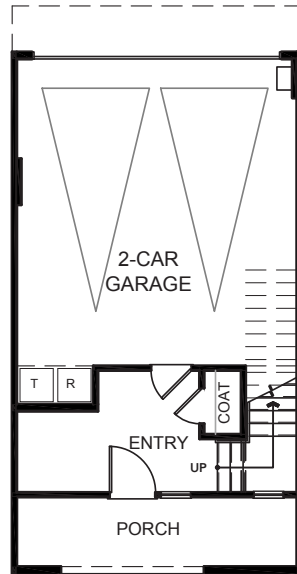
PLAN 1, The Clementine
 2 Bed, 2.5 Bath
 2-Car Side-by-Side Garage
 Approx. 1,236 Sq Ft



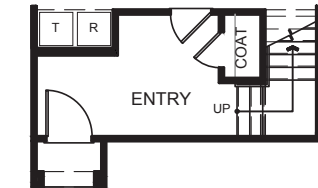
1ST FLOOR
 OPTIONAL STORAGE
 ROOM



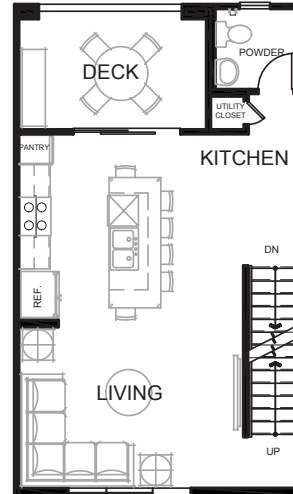
1ST FLOOR
 OPTIONAL WORK FROM
 HOME SPACE



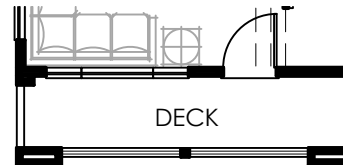
1ST FLOOR



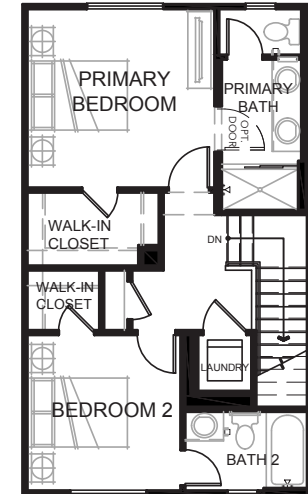
1ST FLOOR
 ALT ENTRY AT PLAN 1D



2ND FLOOR



2ND FLOOR DECK ONLY
 AT PLAN 1C



Laurel Walk by The Olson Company | 13811 Valley View Avenue, La Mirada, CA 90638 | (562) 370-9507 | jbledsoe@theolsonco.com | LaurelWalkHomes.com

Floorplans and renderings are artist's conception based on preliminary information. Some homesites may be pre-plotted for specific variations or options. Please consult your Home Advisor for details. In an effort to improve our homes, Olson Homes reserves the right to change features, prices or plans without notice. Windows, doors, porches, patios and decks vary per elevation and per homesite location. Floorplan measurements are approximate. Prices and availability are subject to change without notice. BRE #01877641. CSLB #939166 Olson Urban Housing, L.P.

